

# Dickinson Homes

---

## TINY HOME

SOMETIMES YOU HAVE TO THINK TINY TO LIVE BIG.

[dickinsonhomes.com](http://dickinsonhomes.com)



### *what we do*

We design and craft custom homes of the highest quality and aesthetic, that reflect the lives of those who call them home. We can build from pre-existing plans (ours and those found elsewhere) or design a completely custom home based on your napkin sketches.



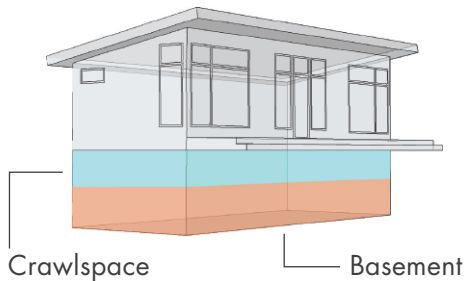
# Tiny Home FAQ

## design

Every client and every site is unique. Our style of building is collaborative, creative, and custom.

## foundation

Our homes are designed to permanently sit on a crawl space or full basement. Interior stairways can easily be added to any design.



## compliance

Our Tiny Homes are built using the same materials and designed to the same codes and standards as a normal home, except smaller in size. Zoning verification may be needed as some areas have a minimum square footage and dimension requirement.

## utilities

We can design and build for off or on the grid. Please contact us for more details.

## sustainable

We offer a series of green options, even above the already environmentally friendly modular process, involving insulation, IAQ, energy, HVAC, appliances, and certifications.

## warranty

15 year structural warranty on the home (Dickinson Home exclusive), plus material and product warranties expedited by us.

## delivery

We deliver to Michigan, Wisconsin and Minnesota.



## project timeline

We will design, build, and deliver your custom Tiny Home over a span of just 10-12 short months.

### 1 Design & Plan

+/- 4 weeks

Home design specifications, pricing, local zoning and code approval.

### Delivery & Site Finish 3

2 weeks

Modules are set on the foundation in 1 day, then our carpentry crew finishes the home.

### 2 Construction

6 weeks

Modules are built in our factory at the same time the site is being developed and the foundation work.

### Completed 4

+/- 12 weeks total

Welcome Home.

---

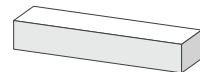
# TH001



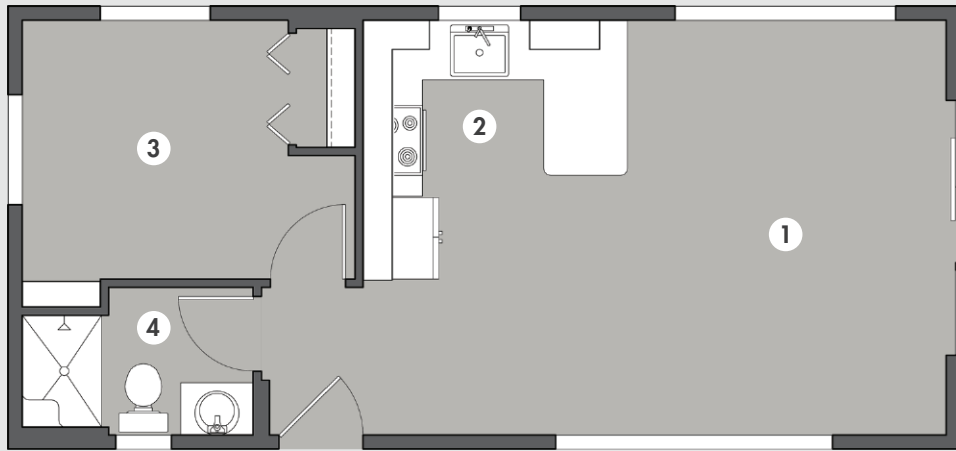
---

*one module design*

One module design with a gable roof. Open living area with an efficient use of space. Large windows on all sides add an abundance of natural light.



# Tiny Home TH001



*layout* — 1 Bed, 1 Bath

1. Living Room	11 ft 4 in x 14 ft 10 in	Area	538 sq ft
2. Kitchen	9 ft 5 in x 9 ft 6 in		
3. Bedroom	9 ft 6 in x 9 ft 4 in		
4. Bathroom	8 ft 3 in x 5 ft 3 in		
		Size	34 ft x 15 ft 10 in x 10 ft

---

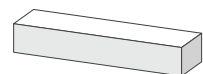
# TH001L



---

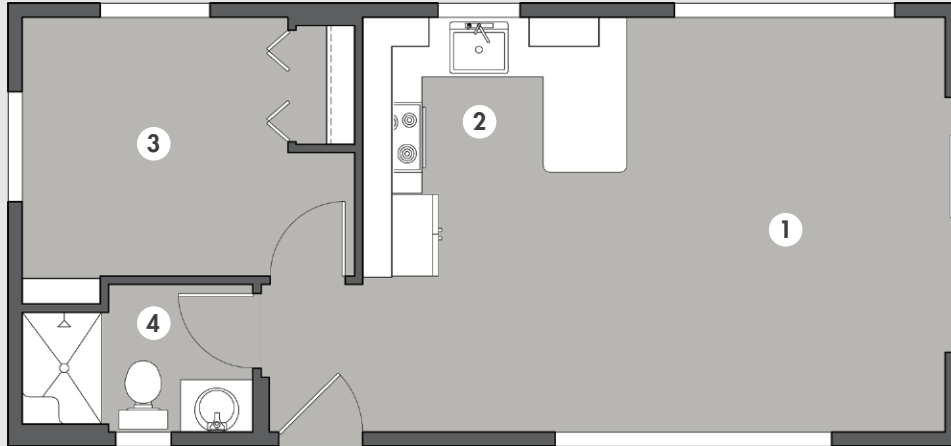
## *one module design*

One module design with a gable roof. This tiny home has all of the character of TH001, but with an added loft space perfect for storage or sleeping. A large trapezoid window allows for more natural light to fill the home.

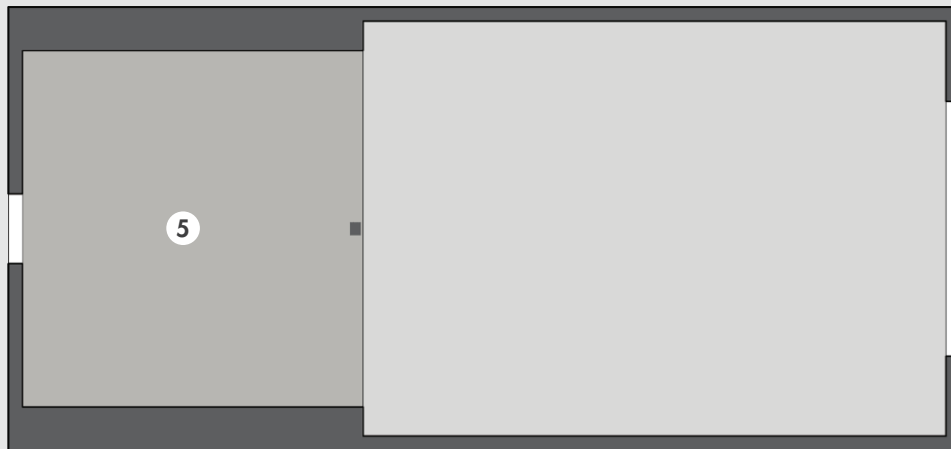


# Tiny Home TH001L

*main floor*



*loft*



*layout* — 1 Bed, 1 Bath

1. Living Room	11 ft 4 in x 14 ft 10 in
2. Kitchen	9 ft 5 in x 9 ft 6 in
3. Bedroom	9 ft 6 in x 9 ft 4 in
4. Bathroom	8 ft 3 in x 5 ft 3 in
5. Loft	12 ft 2 in x 12 ft

Area	682 sq ft
Size	34 ft x 15 ft 10 in x 10 ft

---

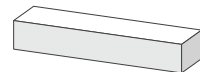
# TH002



---

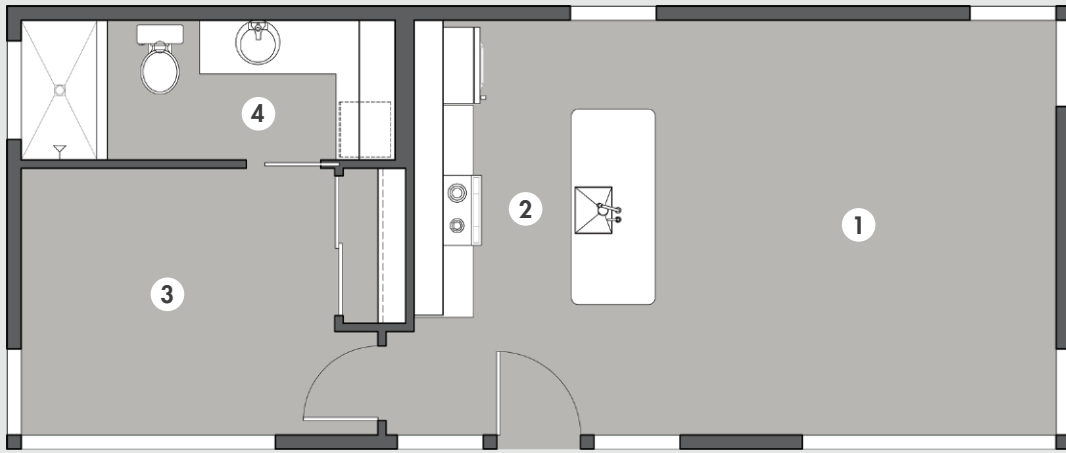
*one module design*

One module design with a shed roof. A unique modern concept that features oversized windows allowing the open living space to feel spacious.





# Tiny Home TH002



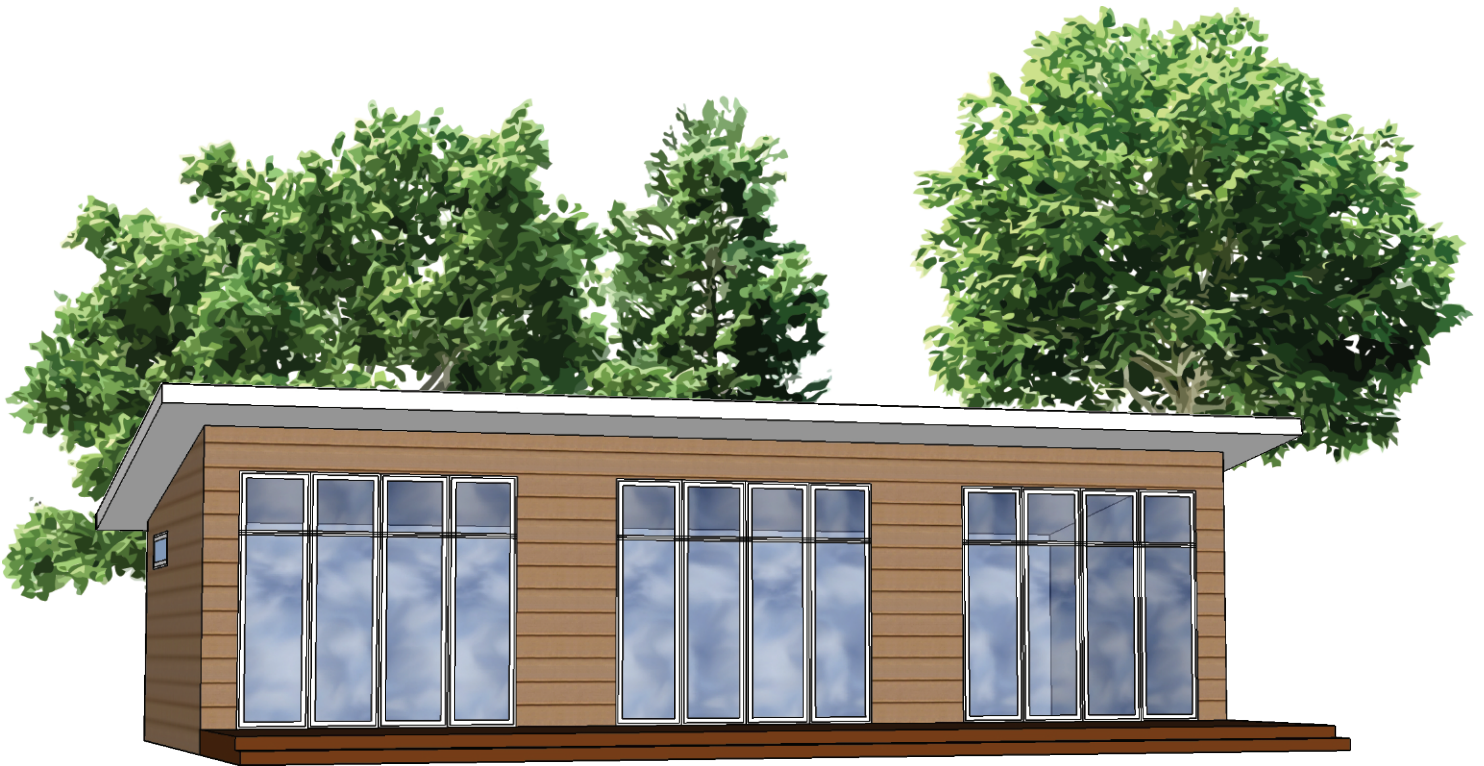
*layout* - 1 Bed, 1 Bath

1. Living Room	14 ft 4 in x 14 ft 10 in
2. Kitchen	8 ft 7 in x 11 ft 1 in
3. Bedroom	11 ft 2 in x 9 ft 6 in
4. Bathroom	13 ft 4 in x 5 ft

Area	601 sq ft
Size	38 ft x 15 ft 10 in x 10 ft

---

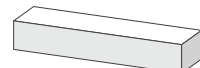
# TH003



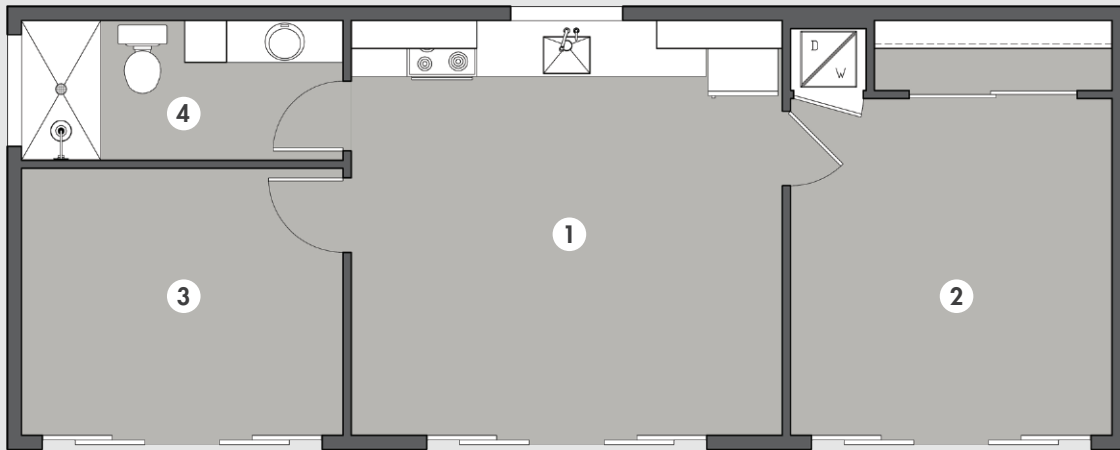
---

## *one module design*

One module design with a shed roof. A modern layout with bedrooms on both sides of the open living space. Oversized windows fill the rooms with natural light and expands the view.



# Tiny Home TH003



## layout - 2 Bed, 1 Bath

1. Living Room/ Kitchen	15 ft 5 in x 14 ft 10 in		
2. Bedroom 1	11 ft 6 in x 12 ft		
3. Bedroom 2	11 ft 6 in x 9 ft 6 in	Area	633 sq ft
4. Bathroom	11 ft 6 in x 5 ft	Size	40 ft x 15 ft 10 in x 10 ft

---

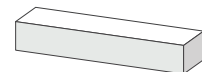
# TH004



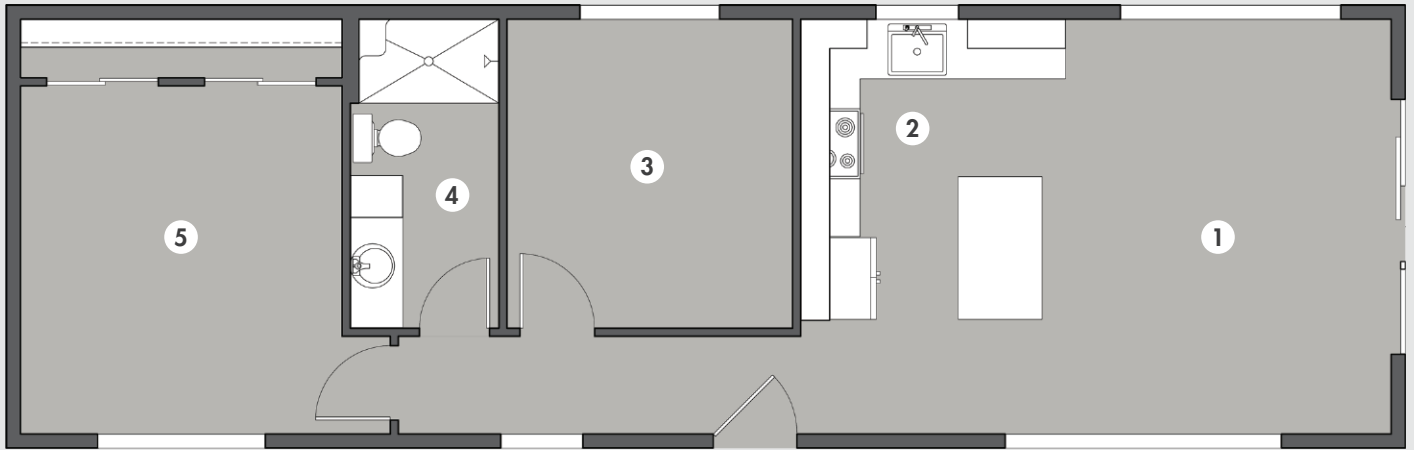
---

*one module design*

One module design with a gable roof. Open living area with an efficient use of space. Large windows on all sides add an abundance of natural light.



# Tiny Home TH004



## layout - 2 Bed, 1 Bath

1. Living Room	11 ft 7 in x 14 ft 10 in
2. Kitchen	9 ft 5 in x 11 ft 4 in
3. Bedroom 1	10 ft 2 in x 11 ft
4. Bathroom	5 ft 3 in x 11 ft
5. Bedroom 2	11 ft 6 in x 12 ft 5 in

Area	791 sq ft
Size	50 ft x 15 ft 10 in x 10 ft

---

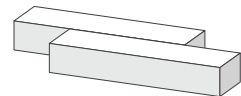
# TH005



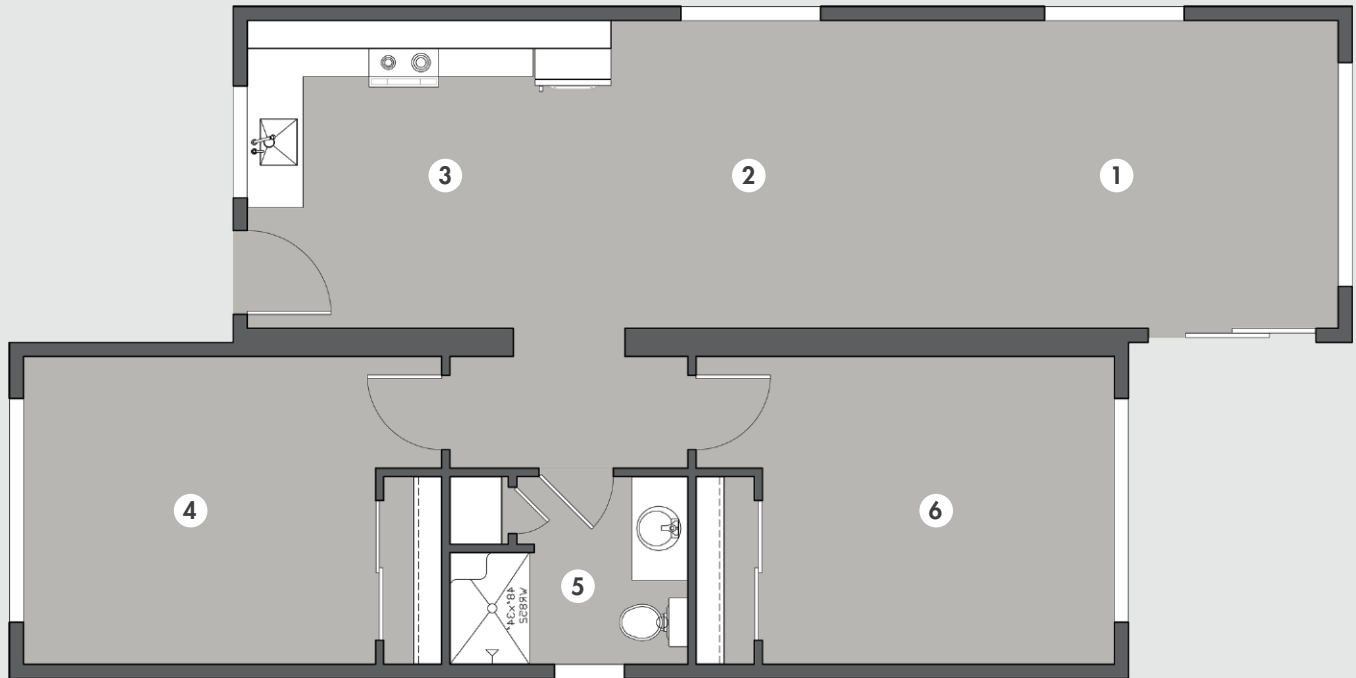
---

## *two module design*

Two module design with an offset gable roof for a modern look. This tiny home features open and spacious living areas with large windows on all sides.



# Tiny Home TH005



## layout - 2 Bed, 1 Bath

1. Living Room	15 ft x 11 ft
2. Dining Room	11 ft x 11 ft
3. Kitchen	13 ft x 11 ft
4. Bedroom 1	12 ft 7 in x 11 ft
5. Bathroom	8 ft 6 in x 6 ft 8 in
6. Bedroom 2	12 ft 7 in x 11 ft

Area	960 sq ft
Size	48 ft x 24 ft x 10 ft

---

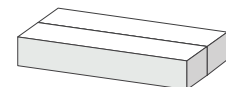
# TH006



---

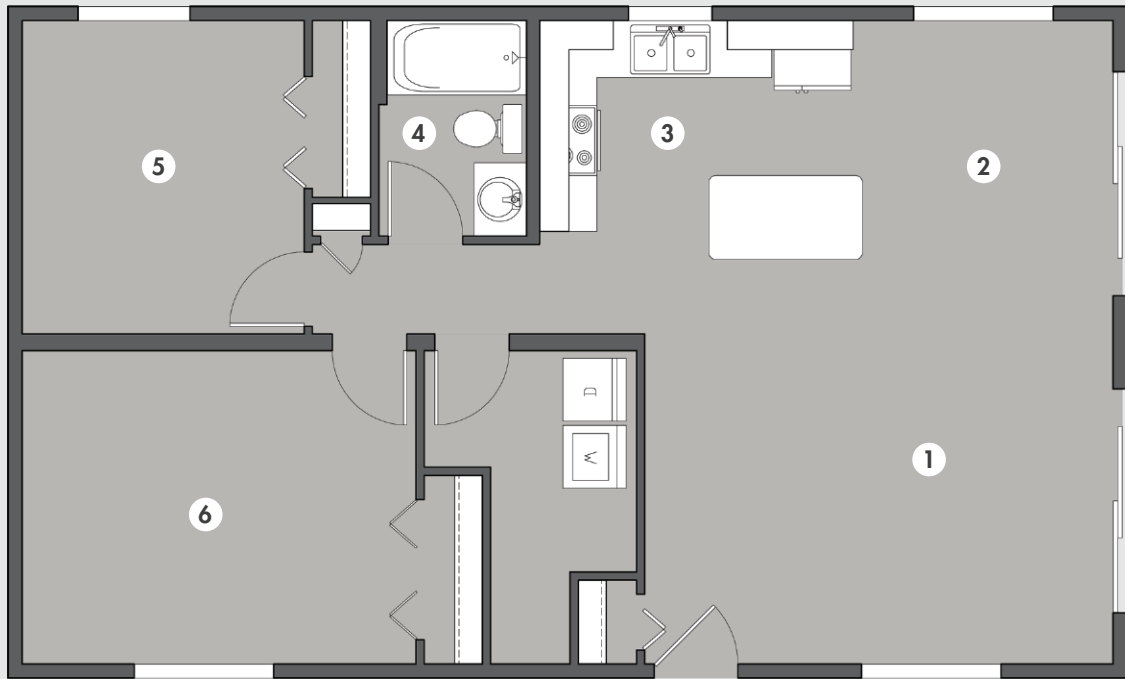
## *two module design*

Two module design with a gable roof. This tiny home features open, cathedral ceilings with oversized windows that fill the rooms with natural light and expands the view.





# Tiny Home TH006



## Layout — 2 Bed, 1 Bath

1. Living Room	16 ft 9 in x 11 ft 6 in
2. Dining Room	9 ft 3 in x 11 ft 2 in
3. Kitchen	11 ft 2 in x 8 ft
4. Bathroom	5 ft 3 in x 7 ft 8 in
5. Bedroom 1	10 ft 1 in x 11 ft 2 in
6. Bedroom 2	14 ft 1 in x 11 ft 2 in

Area	960 sq ft
Size	40 ft x 24 ft x 10 ft

---

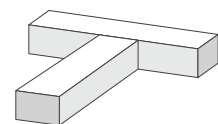
# TH007



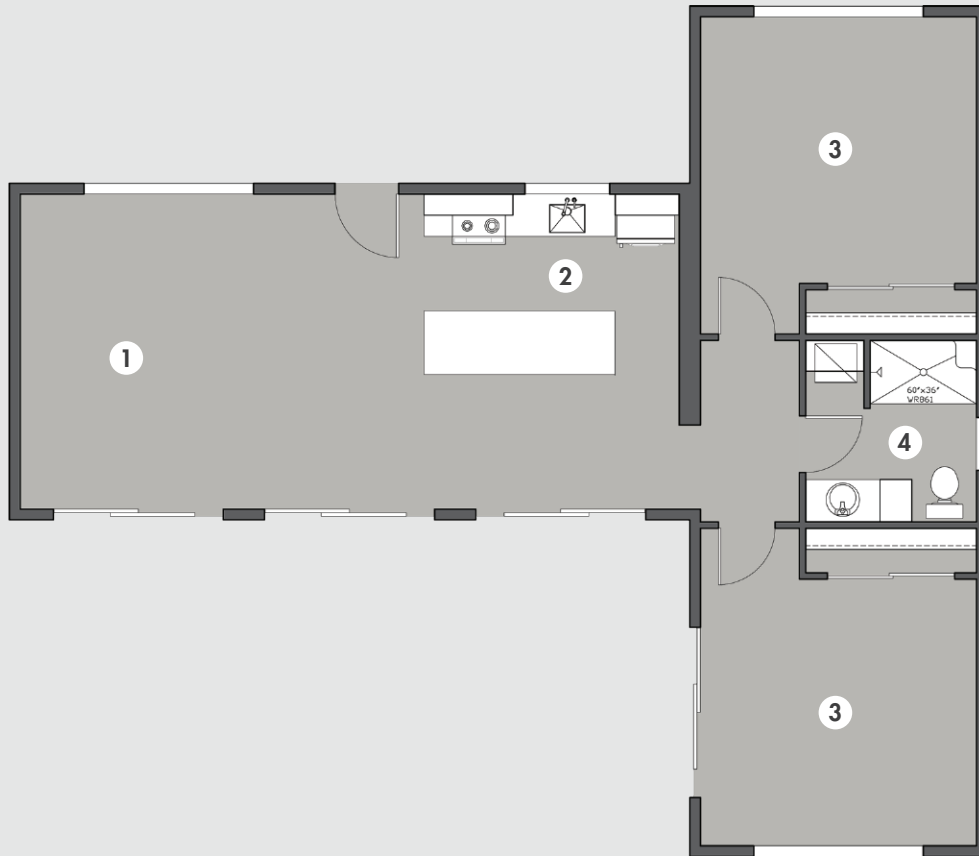
---

## *two module design*

Two module "T" design with a shed roof. A unique modern layout that is naturally lit by the many oversized windows and natural flow from indoor to outdoor spaces.



# Tiny Home TH007



## layout - 2 Bed, 1 Bath

1. Living Room	19 ft x 14 ft 10 in
2. Kitchen	12 ft x 9 ft 6 in
3. Bedroom 1	13 ft x 12 ft 6 in
4. Bathroom	8 ft x 8 ft 6 in
5. Bedroom 2	13 ft x 12 ft 6 in

Area	1,066 sq ft
Size	46 ft x 40 ft x 10 ft

# Dickinson Homes

---

*contact us*

**O** 906.774.2186

**F** 906.774.5207

**T** 800.438.4687

[info@dickinsonhomes.com](mailto:info@dickinsonhomes.com)

---

*visit us*

404 N. Stephenson Ave.  
Iron Mountain, MI 49801

---

*mailing address*

PO Box 2245  
Kingsford, MI 49802

